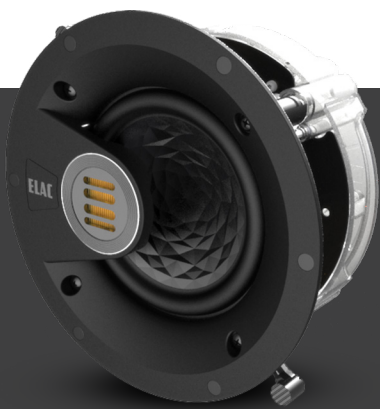


Vertex™ Series III In-ceiling Speakers

Using the same technology and materials of the highly-acclaimed Vela speaker line, the Vertex Series III combines the aesthetics of an architectural speaker with the performance and dynamics of the Vela series.

The easily installed Vertex Series III speakers utilize the same components throughout the series to ensure a perfect sonic match across the line.

Keeping with our philosophy of our famous Jet tweeter sound, Vertex series III speakers will compliment any environment.



Recognized around the world for manufacturing speakers with exceptional build quality and unmatched performance, ELAC continues to deliver with our new Vertex Series of speakers.

VERTEX™ SERIES III IN-CEILING AND IN-WALL SPEAKERS

JET Folded Air-Motion-Transformer and Deep Spheroid Waveguide

Delivering true high-definition sound, ELAC's JET tweeters enthrall with its lightning-fast response and wide dynamic range, offering minimal distortion and lots of headroom. A Deep Spheroid Waveguide is used to improve directivity control and efficiency.

Custom-designed Crystal Membrane Aluminum Woofer

ELAC's unique Crystal Membrane woofer is extremely rigid, yet light weight. This woofer is specifically designed to keep up with the speed of the JET Tweeter while delivering detail in low frequency response.

Intricate Crossover

The combined performance of the speakers demands a more complex crossover so that the speakers maintain their audiophile legacy. Audio-grade components are used so that there is no compromise in performance.

Slim Profile

A slim profile paintable magnetic grill allows for the speaker to virtually disappear in the room.



	IC-VJ63-W	IC-VTJ63-W	IW-VJ63-W
SPECIFICATIONS	In-ceiling Vertex III 6" Speaker	In-ceiling Vertex III Theatre 6" Speaker	In-Wall Vertex III 6" Speaker
Speaker type	2-way, rear side open	2-way, rear side open	2-way, rear side open
Tweeter	Jet Folded Ribbon	Jet Folded Ribbon	Jet Folded Ribbon
Woofer	6 - inch Crystal Aluminum Cone	6 - inch Crystal Aluminum Cone	6 - inch Crystal Aluminum Cone
Crossover frequency	3,000 Hz	3,000 Hz	3,000 Hz
Frequency response	45 to 40,000 Hz	45 to 40,000 Hz	45 to 40,000 Hz
Sensitivity	88 db at 2.83 v/1m	88 db at 2.83 v/1m	88 db at 2.83 v/1m
Recommended amplifier power	40 to 120 Watts	40 to 120 Watts	40 to 120 Watts
Nominal/peak power handling	50/120 Watts	50/120 Watts	50/120 Watts
Nominal impedance	4 Ohm	4 Ohm	4 Ohm
Finish	Black baffle/White grille	Black baffle/White grille	Black baffle/White grille
Grille	Metal magnetic / Paintable	Metal magnetic / Paintable	Metal magnetic / Paintable
Accessories included	Cutout template, manual	Cutout template, manual	Cutout template, manual
Dimensions (diameter)	9.31 in / 236.5 mm	10.4 in / 265 mm	H: 12.69 in / 322.3 mm W: 8.48 in / 215.3 mm D: 4.04 in / 102.5 mm
Cut-out (diameter)	8.11 in / 206 mm	9.53 in / 242 mm	H: 11.61 in / 295 mm W: 7.36 in / 187 mm
Mounting depth	4.37 in / 111 mm	6.81 in / 173 mm	3.94 in / 100 mm

VERTEX™ SERIES III IN-WALL SPEAKERS

JET Folded Air-Motion-Transformer and Deep Spheroid Waveguide

Delivering true high-definition sound, ELAC's JET tweeters enthrall with its lightning-fast response and wide dynamic range, offering minimal distortion and lots of headroom. A Deep Spheroid Waveguide is used to improve directivity control and efficiency.

Custom-designed Crystal Membrane Aluminum Woofer

ELAC's unique Crystal Membrane woofer is extremely rigid, yet light weight. This woofer is specifically designed to keep up with the speed of the JET Tweeter while delivering detail in low frequency response.

In-wall Sealed Enclosure

We have leveraged our extensive knowledge of building high end cabinet speakers to create an in-wall, sealed speaker. These speakers have in-wall aesthetic with cabinet performance.



Slim Profile

A slim profile paintable magnetic grill allows for the speaker to virtually disappear in the room.

Intricate Crossover

The combined performance of the speakers demands a more complex crossover so that the speakers maintain their audiophile legacy.

Audio-grade components are used so that there is no compromise in performance.



	IW-VJ63S	IW-VJ63M	IW-VJ63L
SPECIFICATIONS	In-wall Vertex III 6" Cinema Speaker (Small)	In-wall Vertex III 6" Cinema Speaker (Medium)	In-wall Vertex III 6" Cinema Speaker (Large)
Speaker type	2-way, sealed cabinet	2 1/2-way, sealed cabinet	2 1/2-way, sealed cabinet
Tweeter	Jet Folded Ribbon	Jet Folded Ribbon	Jet Folded Ribbon
Woofers	1 x 6" Active & 1 x 6" Passive Crystal Aluminum Sandwich Cones	2 x 6" Active & 2 x 6" Passive Crystal Aluminum Sandwich Cones	2 x 6" Active & 4 x 6" Passive Crystal Aluminum Sandwich Cones
Crossover frequency	2,400 Hz	450 / 2,400 Hz	450 / 2,400 Hz
Frequency response	48 to 50,000 Hz	42 to 50,000 Hz	38 to 50,000 Hz
Sensitivity	86 db at 2.83 v/1m	88 db at 2.83 v/1m	88 db at 2.83 v/1m
Recommended amplifier power	40 to 120 Watts	40 to 200 Watts	40 to 200 Watts
Nominal/peak power handling	120/160 Watts	120/160 Watts	130/170 Watts
Nominal impedance	4 Ohm	4 Ohm	4 Ohm
Finish	Black baffle/White grille	Black baffle/White grille	Black baffle/White grille
Grille	Metal magnetic / Paintable	Metal magnetic / Paintable	Metal magnetic / Paintable
Accessories included	Cutout template, manual	Cutout template, manual	Cutout template, manual
Dimensions	H: 20.47 in / 520 mm W: 9.76 in / 248 mm	H: 33.54 in / 852 mm W: 9.76 in / 248 mm	H: 46.61 in / 1184 mm W: 9.76 in / 248 mm
Cut-out	H: 19.61 in / 498 mm W: 8.9 in / 226 mm	H: 32.68 in / 830 mm W: 8.9 in / 226 mm	H: 45.75 in / 1162 mm W: 8.9 in / 226 mm
Mounting depth	3.82 in / 97.0 mm	3.82 in / 97.0 mm	3.82 in / 97.0 mm

VERTEX™ SERIES III ON-WALL SPEAKERS

JET Folded Air-Motion-Transformer and Deep Spheroid Waveguide

Delivering true high-definition sound, ELAC's JET tweeters enthral with its lightning-fast response and wide dynamic range, offering minimal distortion and lots of headroom. A Deep Spheroid Waveguide is used to improve directivity control and efficiency.

Custom-designed Crystal Membrane Aluminum Woofer

ELAC's unique Crystal Membrane woofer is extremely rigid, yet light weight. This woofer is specifically designed to keep up with the speed of the JET Tweeter while delivering detail in low frequency response.

On-wall Sealed Enclosure

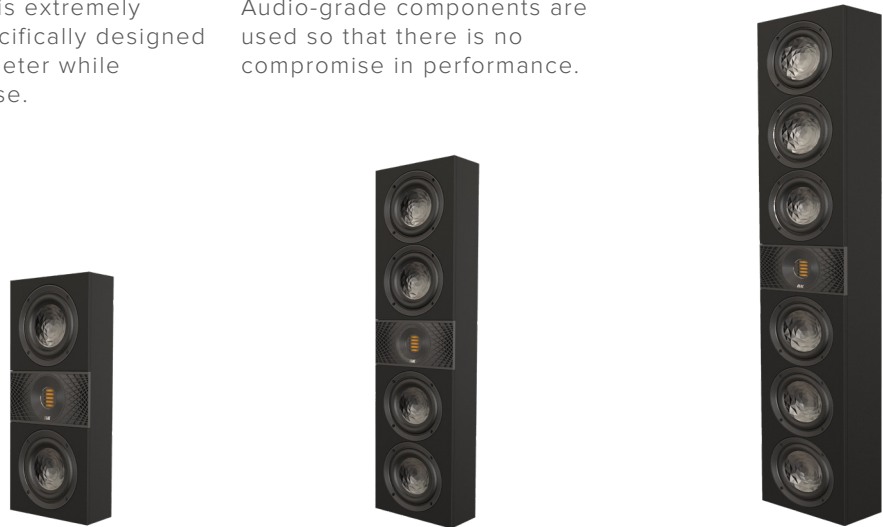
We have leveraged our extensive knowledge of building high end cabinet speakers to create an on-wall, sealed speaker. These speakers have a sleek aesthetic with a cabinet performance.

Slim Profile

A slim profile will compliment interior design. A black magnetic grill covers the speaker to blend with a TV installation.

Intricate Crossover

The combined performance of the speakers demands a more complex crossover so that the speakers maintain their audiophile legacy. Audio-grade components are used so that there is no compromise in performance.



	OW-VJ63S	OW-VJ63M	OW-VJ63L
SPECIFICATIONS	On-wall Vertex III 6" Cinema Speaker (Small)	On-wall Vertex III 6" Cinema Speaker (Medium)	On-wall Vertex III 6" Cinema Speaker (Large)
Speaker type	2-way, sealed cabinet	2 1/2-way, sealed cabinet	2 1/2-way, sealed cabinet
Tweeter	Jet Folded Ribbon	Jet Folded Ribbon	Jet Folded Ribbon
Woofers	1 x 6" Active & 1 x 6" Passive Crystal Aluminum Sandwich Cones	2 x 6" Active & 2 x 6" Passive Crystal Aluminum Sandwich Cones	2 x 6" Active & 4 x 6" Passive Crystal Aluminum Sandwich Cones
Crossover frequency	2,400 Hz	450 / 2,400 Hz	450 / 2,400 Hz
Frequency response	48 to 50,000 Hz	42 to 50,000 Hz	38 to 50,000 Hz
Sensitivity	86 db at 2.83 v/1m	88 db at 2.83 v/1m	88 db at 2.83 v/1m
Recommended amplifier power	40 to 120 Watts	40 to 200 Watts	40 to 200 Watts
Nominal/peak power handling	120/160 Watts	120/160 Watts	130/170 Watts
Nominal impedance	4 Ohm	4 Ohm	4 Ohm
Finish	Black baffle	Black baffle	Black baffle
Grille	Black Fabric Grille	Black Fabric Grille	Black Fabric Grille
Wall mount brackets	Included	Included	Included
Dimensions	H: 20.47 in / 520 mm W: 9.76 in / 248 mm	H: 33.54 in / 852 mm W: 9.76 in / 248 mm	H: 46.61 in / 1184 mm W: 9.76 in / 248 mm
Mounting depth	3.82 in / 97.0 mm	3.82 in / 97.0 mm	3.82 in / 97.0 mm